

## Standard:

ISO11801 Edition 2.0 & IEEE 802.3at & TIA- 568-C.2

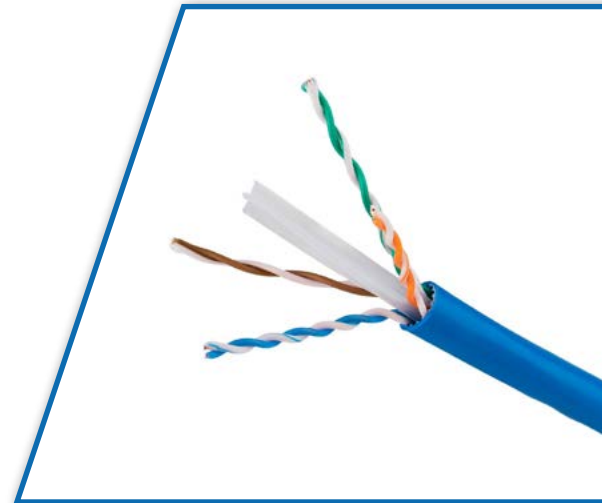
## Application:

Generic cabling systems. Including 10Base -T, 100Base -T  
1000Base -T, ATM 10G & Token Ring

## Construction:

- Conductor: 23AWG annealed bare copper( $\geq 0.56\text{mm}$ )
- Insulation: HDPE
- Overall Diameter:
  - RoHS LSZH Material
  - Nominal Diameter 7.9+/- 0.3 mm
  - Blue color

Number of pair	Colour
1	White/ Blue -Blue
2	White/ Orange -Orange
3	White/ Green -Green
4	White/ Brown -Brown



## Mechanical Characteristics:

Storage Temperature Range	-20°C To +75°C
Installation Temperature Range	+5°C To +50°C
Operating Temperature Range	-20°C To +75°C
Nominal Weight	53KG/KM
Max. Recommended Pulling	120N
Minimal crush resistant/ 10cm	950N
Min. Bending Radius During Installation	8 x cable OD
Min. Bending Radius Installed	4 x cable OD

## Environmental properties & Fire Performances:

Fire Performance	IEC60332-1-2
Smoke density	IEC 61034-2
Halogen acid gas emission	IEC 60754-1&-2

## Low Frequency and DC (at 20°C)

D.C. resistance conductor	≤9.5 Ω/100m
Resistance unbalance:	<2 %
Insulation resistance	≥ 5000 MΩ.km
Mutual capacitance	< 5.6 nF/100M
Capacitance unbalance	< 160 pF/100m
Nominal velocity of propagation	69%
Characteristic Impedance (Ohms)	1 - 250 MHz: 100 ± 15% , 250 - 500 MHz: 100 ± 25%
Delay Skew	≤ 45ns

## Electrical Performance:

Frequency (MHz)	Insertion loss	NEXT	NEXT PS	ACR PS	ACR F	ACR F PS	Return Loss	Delay	ANEXT PS	AACRF PS
1	2.1	82.3	81.3	71.2	67.8	64.8	20.0	570	67.0	67.0
4	3.8	73.3	72.3	60.5	55.8	52.8	23.0	552	67.0	66.2
8	5.3	68.8	67.8	54.4	49.7	46.7	24.5	547	67.0	60.1
10	5.9	67.3	66.3	52.4	47.8	44.8	25.0	545	67.0	58.2
16	7.5	56.2	63.2	47.8	43.7	40.7	25.0	543	67.0	54.1
20	8.4	64.2	61.8	45.4	41.8	38.8	25.0	542	67.0	52.2
25	9.4	61.3	60.3	43.0	39.8	36.8	24.3	541	67.0	50.2
31.25	10.5	59.9	58.9	40.4	37.9	34.9	23.6	540	67.0	48.3
62.5	15.0	55.4	54.4	31.4	31.9	28.9	21.5	539	65.6	42.3
100	19.1	52.3	51.8	24.2	27.8	24.8	20.1	538	62.5	38.2
200	27.6	47.8	46.8	11.2	21.8	18.8	18.0	537	58.0	32.2
250	31.1	46.3	45.8	6.3	19.8	16.8	17.3	536	56.5	30.2
300	34.3	45.1	44.1	1.9	18.3	15.3	16.8	536	55.3	28.7
350	36.8	44.1	43.1		16.9	13.9	16.3	536	54.3	27.3
400	37.5	43.3	42.3		15.8	12.8	15.9	536	53.5	26.2
450	40.0	42.5	43.5		14.7	11.7	15.5	536	52.7	25.1
500	42.0	41.8	40.8		13.8	10.8	15.2	536	52.0	24.2

Cable length: 305m/Reel.

## Ordering Info:

Part No.	Description
100103	Unshielded Twisted Pair Cable (U/UTP), Category 6A, 4 Pairs, solid LSZH, 305m box